

# Botanical Traditions:

## Spring 2011 Newsletter

www.botanicaltraditions.com.au  
po box 242, Camberwell, 3123  
(03) 9012 5380

Welcome to the Spring Newsletter. It's been a busy few months at Botanical Traditions, with a new baby on board, new staff and an award ceremony for the recent AILDM design competition. We've also been looking at council town planning, and what to do in the garden in Spring.

We hope that you enjoy the Newsletter and that all of our clients are safe and well.

## New Additions and Staff

### New Additions

On Monday 23rd May, Ruth and Brent welcomed baby Jamie Alexandria Czermak (at 6lb 10oz) to the Botanical Traditions family. Now nearly 3 months old, Jamie is a bouncing, happy, voiciferous baby girl, and her cute face and happy gurglings bring a smile to everyone in the office. A big thank you for all the good wishes and gifts received!



### New Staff

Kim Kitchen recently joined the team at Botanical Traditions. Having previously completed a Science degree, Kim has turned her hand to landscape design, and recently completed her Certificate IV in Applied Design (Landscape).

Having developed a love for the outdoors and the Australian bush at an early age, Kim is keen to share her passion for native plants and natural systems and to incorporate these into gardens. Her interests also include construction and sustainability, and she is excited to be involved in sustainable landscape projects such as those undertaken by Botanical Traditions.

Deb Barnard has also joined us as our new bookkeeper. She will help to keep us (and our clients) on track!



## Spring in the Garden

Spring is a fantastic time in the garden. Many natives are in flower, blossoms appear on many deciduous trees and bulbs spring out of the ground with dashes of vibrant colours.

As the temperature rises, we can look forward to and plan and prepare for the summer months, as well as taking pleasure in the joys of Spring!

### Handy Hints for Spring

- \*Plant summer and autumn flowering bulbs
- \*Plant summer annuals, flowering shrubs and native plants
- \*Plant tomato, lettuce and other summer vegetable seeds
- \*Prune roses and winter-flowering shrubs
- \*Feed fruit trees, roses, lawns, annuals
- \*Watch for citrus gall, scab, scale and aphids
- \*Weed and mulch before new weeds can get established



## Holiday in Batemans Bay

We are happy to offer a special deal to all of our clients.

Stay Mon - Fri (5 nights) at 'Corymbia Batemans Bay' and receive the Saturday night for free. Offer is not valid during peak periods. To check availability please go to <http://www.batemansbayaccommodation.com.au/accommodation/1264>. To redeem offer email [cralston@rhatemansbay.com.au](mailto:cralston@rhatemansbay.com.au) and quote code BTCClient.

# Botanical Traditions:

## Spring 2011 Newsletter

### AILDM LANDSCAPE DESIGN AWARDS 2011

#### Introduction

AILDM (Australian Institute of Landscape Designers and Managers) was formed in 1994 by a small group of landscape students, who recognised a need for a professional body to serve graduates and professionals in the industry. Since then, AILDM has grown into a national association of qualified landscape design and management professionals, and has members in all states and major cities as well as many regional centres. Ruth has held the position of Vice President for the last two years, and was the Victorian board member prior to this.

The main aims of the association include developing and advancing landscape design and management practices, to provide a forum for members to engage with others in the profession, and to encourage and reward the study, innovation and forward-thinking within landscapes.

#### Design Competition

Every year, AILDM runs a national design competition to recognise the achievements and design innovations of its members. The award showcases the very best gardens and landscapes across the country, and the nine categories are hotly contested.

This year, we entered a residential garden in Category 1 - Residential Under \$50 000.

The property is located in Blackburn, 17km east of the Melbourne CBD, a suburban area renowned for its natural bush-like setting and significant pockets of remnant vegetation. Gardiners Creek runs through the suburb, highlights of which include wetlands, extensive walking tracks, tall mature and remnant Eucalypts, 82 species of bird life and significant habitat for local fauna.

Our brief was to provide a low-maintenance native garden, with an entertaining space, vistas from the house and the inclusion of a water feature, in a space that was both calming and personal whilst sympathetic to the house and to the neighbourhood of Blackburn.



Concept sketch

#### The Natural Hideaway

This garden showcases indigenous planting of the Blackburn area and other natives, which frame the designed garden spaces and provide vistas from the house through the garden to trees on neighbouring properties. Low maintenance native plants and indigenous plants were used, including; *Brachyscome multifida*, *Viola hederacea*, *Arthropodium strictum*, *Bulbine bulbosa*, *Dianella revoluta*, *Dichelachne crinita* and *Indigofera australis*. The planting also included meadow-style planting around the pond to create seasonal interest and introduce a fine texture.

Other features include:

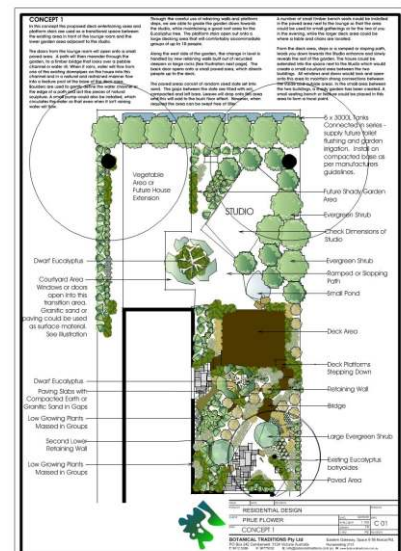
- \* Australian hardwood timber deck
- \* Stone pond filled from a diverted down pipe, with a timber bridge over the pond
- \* Silver granite toppings pathway with Myrtle Slate random paving to link the deck area with inside
- \* Rock bench

#### Award

The Natural Hideaway was nominated as a finalist, and at the the annual AILDM gala dinner on Saturday 13th August, Fiona Hurse, representing the Botanical Traditions team, proudly accepted a Highly Commended award for our entry into this years competition.

To receive an AILDM Design Award requires hard work, inspiration, knowledge and dedication, and it is a wonderful achievement to be recognised for our work by this prestigious award.

The winning entries will also be featured in the Backyard Garden Design Ideas magazine Issue 9.5, on sale November 14th 2011.



# Botanical Traditions: Spring 2011 Newsletter

www.botanicaltraditions.com.au  
po box 242, Camberwell, 3123  
(03) 9012 5380

## AILDM Landscape Design Awards - The Natural Hideaway



Existing level problems and poor condition of retaining wall



Excavation and grading



Deck construction and drainage



Natural ponds from diverted down pipe and rock seat



View of 'natural' pond, timber bridge and planting  
Natural pond  
Diverted Downpipe



Timber bridge over natural pond



View across entertaining deck area



Just before planting



View towards entertaining deck



View of deck stairs and concrete retaining walls



Banksia spinulosa 'Coastal Cushions'



*Dianella prunia* 'Utopia'

# Botanical Traditions:

## Spring 2011 Newsletter

### Council Town Planning Services

Often as part of lodging a Planning Permit to Council, a landscape plan will also be required. A landscape plan clearly illustrates the existing and proposed planting layout of a property, as well as other features.

Botanical Traditions understand that each site is unique, each owner has different levels of priorities and / or aspirations and there are different planning regulations and council requirements associated with every property. We therefore consider a range of items when completing a Landscape Plan, including:

- \* Functional including; drainage and runoff, location of living areas, understanding site microclimates & site conditions.
- \* Aesthetic including; complimenting the landscape with surrounding environment, screening undesirable views etc.

\* Environmental including; Native and/or indigenous plant selection, use of plants for multipurposes (e.g. Deciduous plants on the North of house etc.), weed removal, biodiversity protection etc.

#### Other Services

Botanical Traditions offers a range of services including design and consulting services for residential projects, water retailers, government departments, commercial projects and community organisations. We strive to achieve high quality design solutions and therefore extend our services beyond the design phase to cover both tender design and contract documentation. Depending on the level of detail required these plans can be customised to suit your intended purpose whether it is for council permit application or final construction.

For any further information, please consult our website, at [www.botanicaltraditions.com.au](http://www.botanicaltraditions.com.au)

Clear, easy to read, scaled layout and planting plan

Range of surface treatments

Existing plants to be retained and removed

Proposed plant schedule

Planting notes and specifications

Planting detail

Legend and material key

**LANDSCAPE PLAN - PROPOSED LANDSCAPE PLAN**  
 SCALE 1 : 100 @ A1

**4 DREWETT STREET**

Plant Schedule	Plant Name	Quantity	Plant Height	Plant Spacing	Plant Spacing	Plant Spacing	Plant Spacing	Plant Spacing	Plant Spacing
1	Plant Name	Quantity	Plant Height	Plant Spacing	Plant Spacing	Plant Spacing	Plant Spacing	Plant Spacing	Plant Spacing
2	Plant Name	Quantity	Plant Height	Plant Spacing	Plant Spacing	Plant Spacing	Plant Spacing	Plant Spacing	Plant Spacing
3	Plant Name	Quantity	Plant Height	Plant Spacing	Plant Spacing	Plant Spacing	Plant Spacing	Plant Spacing	Plant Spacing

**NOTES:**  
 This landscape plan is to be read in conjunction with further plans prepared by Impacted Design Consultants. Please refer to the architects plans for existing features, proposed and existing house details, elevations, sections, fencing and location of neighbouring features.

Illustrated above is an example of a Preliminary Plan submitted to council with a permit application. As each council requirements vary, we customize each plan to suit there specific requirements. However, typically these Council Plans will include as a minimum, an indication of surface treatments, planting plan, planting schedules, basic notes on soil type, soil preparation, mulch, irrigation and tree protection measures.